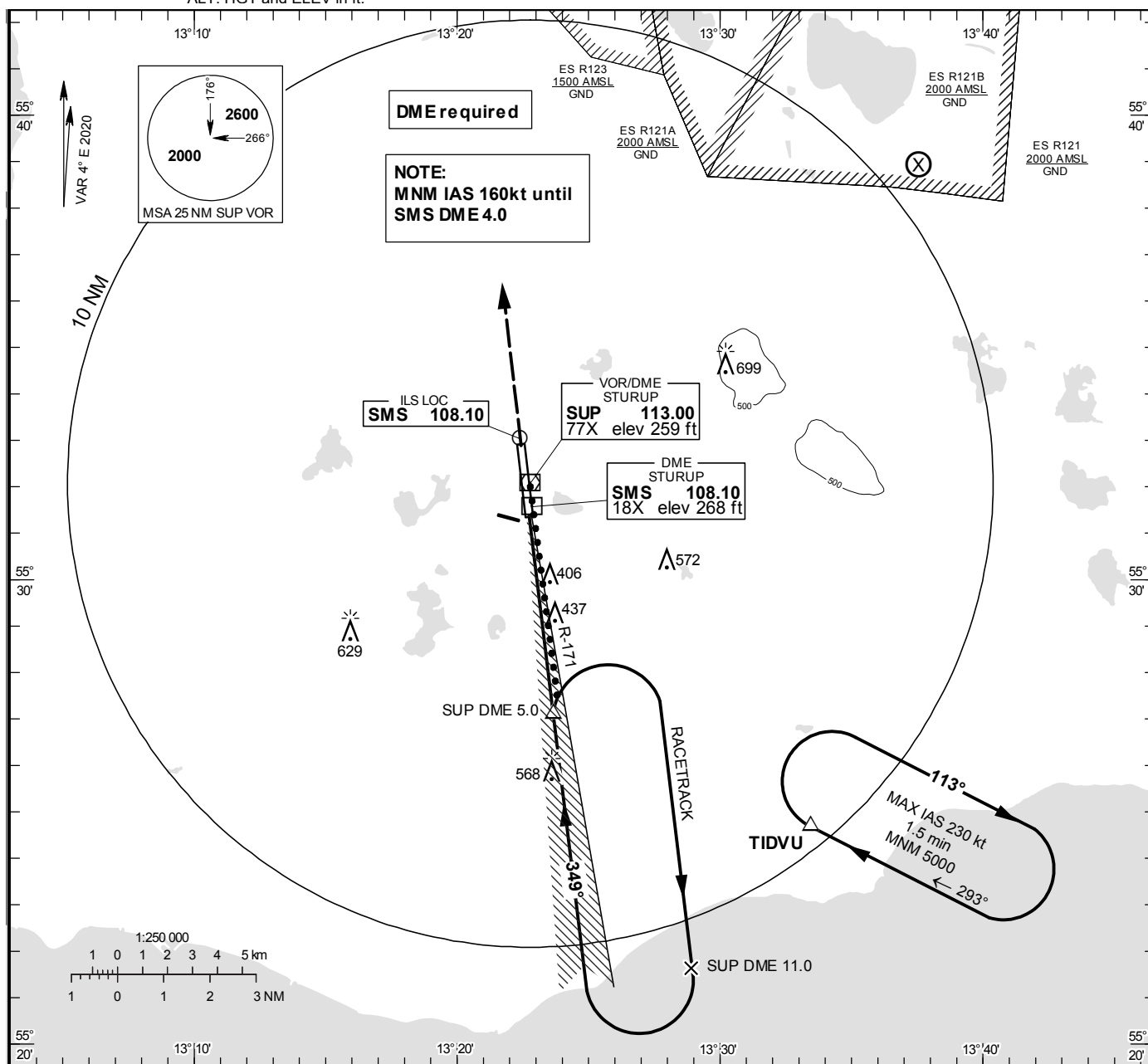


INSTRUMENT
APPROACH
CHART – ICAO

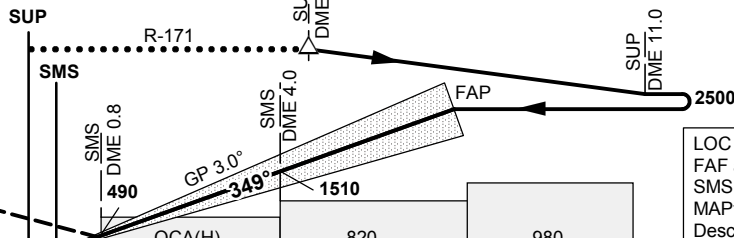
THR ELEV 236.3 ft, AD ELEV 237 ft

OCH are related to THR.
Circling OCH are related to AD ELEV.
BRG are MAG
ALT. HGT and ELEV in ft.

STURUP TOWER	118.805
SWEDEN CONTROL	134.980
STURUP ATIS	129.280



TA 5000 ft AMSL RDH 52.2 ft Special COM Failure procedures see AIP-AD2 *Timing not authorized for defining the MAPt

OM replaced by SMS DME 4.0
MM replaced by SMS DME 0.8CLIMB STRAIGHT AHEAD
TO 2500,
RADAR VECTORED FOR
A NEW APPROACH.LOC
FAF at SMS DME 7.1 2500
SMS DME 4.0 1510
MAPt at SMS DME 0.8
Descent grad 5.2%

OCA (H)						Final approach					
Cat of ACFT	A	B	C	D	D _L	DME SMS NM	7	6	5	4	3
Straight-in	378(142)	389(153)	405(169)	420(184)	425(189)	ALT	2460	2150	1830	1510	1190
Approach	LOC	690 (460)					GS	kt	80	100	120
						Time		min:s	4:45	3:48	3:10
Circling	710 (480)	740 (510)	970(740)	1100(870)	1100(870)	Rate of descent	ft/min	425	535	640	745

CHANGE: Editorial